



TouchMix™ Series

Digital Mixers

Features

- Mega console performance in a compact form factor
- Capacitive touch screen graphical user interface combined with hardware controls for fast and intuitive operation
 - Multi-touch screen on TouchMix-30 Pro
- Over 120 Live Sound Channel Presets for a wide range of sources and instruments.
- Anti-Feedback; Room Tuning; Gain and Effects Wizards
- Real Time Analyzer (RTA)
 - 2x RTA on TouchMix-30 Pro
- Comprehensive, on-board Info System guides and assists users.
- 4-Band full Parametric EQ, variable High- and Low-Pass Filters on all input channels.
- Gate, Compressor and Delay on all input channels.
- All outputs feature 1/3 Octave Graphic Equalization and 6-band Parametric EQ plus Limiters, Delay and 8 Notch Filters.
 - 12 Notch Filters on TouchMix-30 Pro
- Eight DCA groups; Eight Mute groups
- Eight Sub-Groups with 6-band full Parametric EQ, variable High- and Low-Pass Filters and Limiter; may be linked for stereo*
- On-board settings for popular QSC loudspeakers including K and K.2 Series
- Four professional quality Stereo DSP Processors plus a Pitch Corrector (Six processors on TouchMix-30 Pro)
- Touch-and-Route Patch Matrix for easy "multing" of inputs to mixer channels*
- Copy and Paste function easily duplicates mixes, channels, EQ, dynamics and more
- 14/10/4 aux busses may be paired for stereo; direct drive of wired in-ear monitors (IEM)
- Records and plays back multi-track wave files (32/22/14 tracks) using external hard drive; capable of recording all input channels plus a user-selected stereo output pair
- Interfaces with most DAW software running on Mac® and Windows® computers*
- MP3 USB playback
- Remote control via mobile devices over Wi-Fi
- Rack-mountable with optional Accessory Kit

*TouchMix-30 Pro only



TouchMix-8

TouchMix-30 Pro

TouchMix-16

TouchMix™ is quite simply the most powerful small-format digital mixer series ever created. From the highly compact TouchMix-8 to the flagship TouchMix-30 Pro, the TouchMix Series uniquely offers the features, capabilities and sound quality of the world's most esteemed large format consoles in a refined and portable package that's small enough to be carry-on luggage. Perfect for musicians, bands, AV production professionals and small performance venues, TouchMix also goes "Beyond Mixing" by also offering Wizards, Presets and other beneficial tools that help both seasoned audio professionals and novices alike get great results quickly and easily.

Professional in Every Way

Compact in size but enormously powerful and capable, TouchMix represents a new paradigm for small-format digital mixers:

Audio quality.

The most important aspect of any mixer is audio quality and in this regard, TouchMix leads the pack among all small mixers. With professional-grade, class-A microphone preamps, top-quality converters and meticulous attention to design detail throughout the entire signal path, the TouchMix Series delivers pristine audio quality that rivals mixers multiple times its cost.

Results matter.

The TouchMix design team set out from the start to create a mixer with an intuitive workflow and straightforward navigation that is understandable for the less experienced user and fast for the professional — all without sacrificing any "big console" features or capabilities. As a result, the mixer is extremely easy to learn and operate. Many TouchMix functions such as EQ, compressors, gates and limiters offer a choice of Advanced Mode operation with total control over all parameters or Simple Mode that presents only the most essential controls.

Big mixer. Small package

A TouchMix digital mixer is one of the most advanced and capable audio processing devices ever created. Its capabilities rival many of the world's largest and most prestigious large-format consoles but with the added benefit of being highly portable and right-sized for the majority of today's portable sound reinforcement applications. Its small channel count also makes it affordable to a vast array of users who would otherwise never have imagined having such advanced capabilities for their own use.

Wireless when you want it. Hardware when you don't.

The TouchMix Control app for iOS and Android devices provides a portable, wireless interface to the mixer and offers additional control surfaces for the system operator. Individual users can be granted full access or limited to a selected set of controls such as a single monitor mix.

In instances where Wi-Fi control is either not reliable or not desired, the elegant touch-and-turn interface of TouchMix allows for tactile control over fader and mixer parameters while also providing a reliable fixed hardware connection to vital mixer functions.



TouchMix Control App for iOS® and Android™ devices

Professional Results Made Easy

Achieving a quality mix under varying conditions can be a challenging task for even the most seasoned audio professionals. Understanding this, the TouchMix design team put their decades of live sound experience into creating a mixer that delivers great results quickly and easily, whatever the situation. From setting up the most basic instrument or vocal channel to optimizing dynamics and processing to tackling complex monitor routing, TouchMix makes it all fast and easy for professionals and novices alike.



Simple Mode

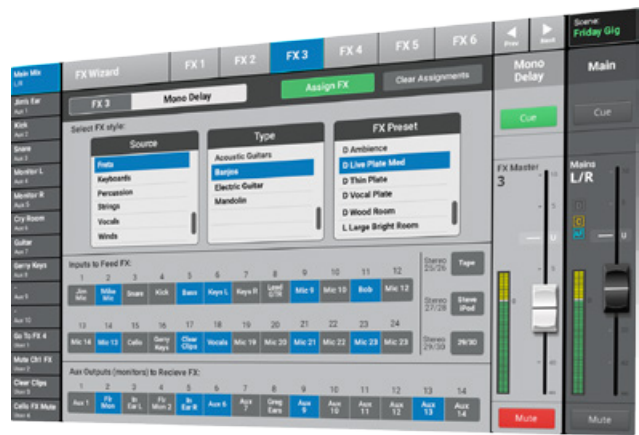
For less experienced users, Simple Mode is available on EQ, gates, compressors, limiters and effects.

Advanced Mode

For more experienced users, Advanced Mode offers complete access and control to the mixer's suite of dynamics and processing functions.

Channel Presets

Developed in real-world settings by live sound engineers with decades of experience, the extensive Channel Preset Library offers remarkably accurate and infinitely useable settings for the most commonly used instruments and mics. Used as-is or as a starting point, Channel Presets help users of all levels achieve a great mix quickly and easily.



Live sound. Studio grade.

With class-A microphone preamps and pristine audio quality throughout the signal chain, TouchMix delivers quality results both live and in the studio.

Studio-Grade Effects Processors

TouchMix onboard effects rival the world's most sophisticated (and expensive) outboard processors. The TouchMix-30 Pro has six high-quality effects processors while the TouchMix-8 and -16 each have four. All effects processors can be utilized simultaneously without giving up channels or Auxes. You can choose from two types of reverb, chorus, pitch change, mono or stereo delay. There's even an Effects Wizard that helps you choose the right effect and apply it where you need it.

Live Multi-Track Recording/Playback

TouchMix can record all inputs plus a Main or Aux Stereo mix directly to an external USB hard drive without a computer. On playback, tracks can be mixed down or combined with live inputs as live performance tracks. The free TouchMix DAW utility assists with importing tracks into PC or Mac® DAW (Digital Audio Workstation) software as well as exporting DAW tracks for playback on TouchMix.

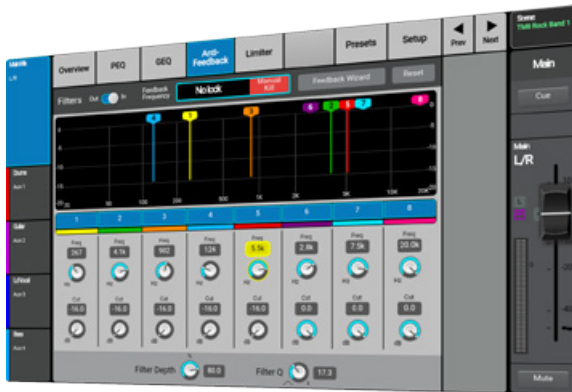
DAW Interface

The TouchMix-30 Pro provides a 32 x 32 DAW interface for macOS® and Windows® DAW applications.



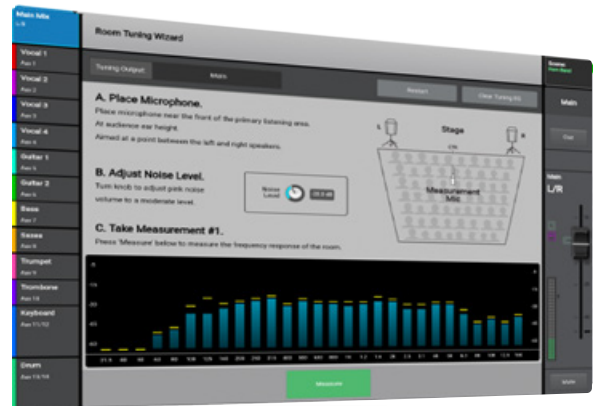
Powerful “Big Console” Features

Don't be fooled by its size. TouchMix is one of the most capable mixing products ever created.



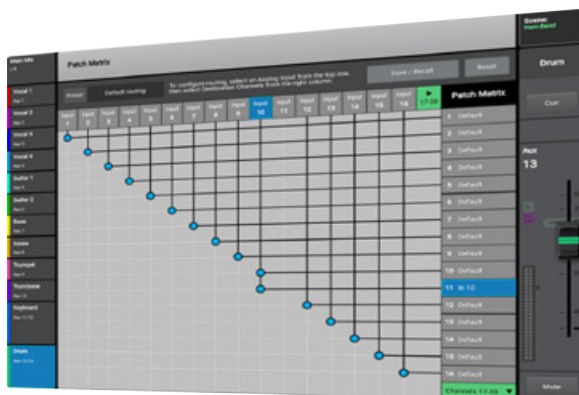
Anti-Feedback Wizard

The TouchMix Anti- Feedback Wizard automates the process of “ringing out” the system while also offering full manual control and override during performances.



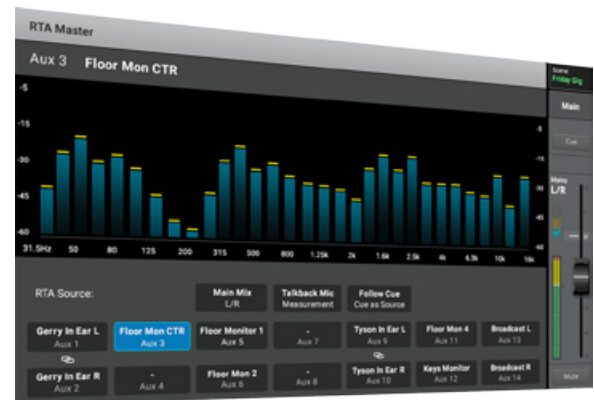
Room Tuning Wizard

The TouchMix-30 Pro Room Tuning Wizard assists the user in adjusting EQ and fine-tuning a loudspeaker system to an acoustical space.



Touch-and-Route Patch Matrix

The Patch Matrix (TouchMix-30 Pro only) provides easy “multing” and rearrangement of inputs to mixer channels, helping to simplify complex routing schemes.



Real-Time Analyzer

The TouchMix-30 Pro includes two real-time analyzers (RTA). One RTA may be displayed along with the equalizer of any currently selected input or output channel. A second, independent RTA may be assigned to display the audio signal of any output, the Cue buss or the Talkback microphone input. TouchMix-8/16 models include a single RTA.



TouchMix-30 Pro

The flagship of the TouchMix Series, TouchMix-30 Pro is perfect for production professionals, musicians and bands as well as live performance venues. Its 32 mixing channels (24 Mic/Line, 6 Line, Stereo USB) and 16 outputs offer tremendous signal routing flexibility for a wide range of applications.



TouchMix-16

The TouchMix-16 offers a full suite of professional, results-oriented features and incredible sound quality. Its 22 mixing channels (16 mic/line / 2 stereo line / stereo USB inputs) make it the perfect choice for those who don't need the higher channel count of the flagship TouchMix-30 Pro.



Included carry-case and Wi-Fi dongle



TouchMix-8

Designed for low channel count applications, the TouchMix-8 (14 mixing channels — 8 mic/line / 2 stereo line, stereo USB inputs) offers the incredible power and sound quality of its larger siblings in our smallest form factor mixer. A perfect choice for solo and small combo performers, AV professionals or as a drum/keyboard sub-mixer, the TouchMix-8 offers amazing performance, flexibility and value.



Included carry-case and Wi-Fi dongle

TouchMix Accessories

TMR-1 Rack-Mounting Kit
for TouchMix-8/16



TouchMix-30 Pro
Tablet Support Stand
(tablet not included)



TouchMix-30 Pro Tote

TouchMix-30 Pro
Dust Cover



Rack-Mounting Kit
for TouchMix-30 Pro



Specifications

TouchMix-30 Pro

| | |
|--|---|
| Display | 10" (254 mm) diagonal, 1024 x 600 pixel, color TFT, capacitive multi-touch sensing |
| Inputs | |
| Total | 32 |
| Mic/Line | 24 (20 XLR, 4 XLR combo) |
| Line | 6 (balanced, 1/4" TRS + top panel 1/8" (3.5 mm) stereo) |
| Stereo USB | Stereo USB / MP3 playback |
| Talkback | 1 (XLR, 48 V) |
| Input Channel Processing | |
| EQ | 4-band Parametric EQ with Hi/Low Shelving option, Variable 24 db/octave HPF and LPF |
| Dynamics | Gate, Compressor |
| Delay | Delay (100 msec max) |
| Outputs | |
| Total | 16 |
| Main L/R | 2 (XLR line-level) |
| Aux | 14 (XLR, line-level) |
| in Ear Monitor (Stereo) | 2 (TRS, 16 ohm min. impedance, from Auxes 11/12 and 13/14) |
| Cue | 2 (Stereo, TRS, line or headphone, 16 ohm min. impedance) |
| Monitor L/R | 2 (Stereo, XLR) |
| Output Channel Processing | |
| EQ | 1/3 octave Graphic EQ (Main L/R, Auxes 1-6), 6-band Parametric EQ, Variable High- and Low-Pass Filters |
| Anti-Feedback Filters | 12-band Anti-Feedback Filters |
| Dynamics | Compressor / Limiter |
| Delay | 100 msec |
| Recording / Playback¹ | |
| Multi-Track | 32 x 32 tracks direct to hard drive |
| DAW | 32 x 32 tracks (macOS® and Windows®) |
| MP3 | Stereo USB / MP3 playback |
| Groups | |
| DCA | 8 (with Mutes) |
| Mute | 8 |
| Sub Groups | 8 (with 6-band Parametric EQ, HPF and LPF, Limiter) |
| Cue | Selectable. AFL, PFL, Solo in Place |
| Effects | 6 simultaneous, professional effects engines including Reverb, Echo, Delay, Chorus, Pitch Shift |
| 1 Pitch Correct (assignable to any mono input channel) | 1 Pitch Correct (assignable to any mono input channel) |
| Real Time Analyzer (RTA) | 2 (1/3 octave, assignable to channels or user selectable source) |
| Preset Memory | 99 User Scenes, 120 Factory Presets, 99 User Presets |
| Digital Connections | 2 USB A connectors, 1 USB B connector, 1 RJ-45 port (connection for Wi-Fi router) |
| External Control² | TouchMix-30 Control App for iOS® and Android™ devices controls all mixer functions via Wi-Fi. |
| Wi-Fi³ | Requires external ethernet Wi-Fi router (recommended) or USB Wi-Fi adaptor ³ (not included) |
| Dimensions (HWD) | |
| Shipping | 12 in X 23.7 in X 19.5 in (30.5 cm X 60.3 cm X 49.5 cm) |
| Mixer only | 7.5 in X 16.9 in X 18.1 in (19 cm X 42.9 cm X 46 cm) |
| Weight | |
| Shipping | 25.2 lb (11.4 kg) |
| Mixer only | 17.5 lb (7.9 kg) |
| Power Requirements | 85 W, 100-240 VAC, 50-60 Hz |
| Sampling Frequency | Selectable 44.1 kHz or 48 kHz |
| Internal Processing | 32-bit floating point |
| THD | <0.005%, +4 dBu; 20 Hz-20 kHz, unity gain, any input to any output |
| Frequency Response | 20 Hz-20 kHz +/-0.5 dB, any input to any output |
| Dynamic Range | 105 dB |
| Equivalent Input Noise | -126 dBu |
| Residual Output Noise | -86 dBu |
| Crosstalk | -80 dB |
| S/N Ratio | -94 dB |
| Gain (Mic Inputs) | 75 dB (60 dB analog, 15 dB digital) |
| Maximum Input Level | +16 dB (XLR mic/line inputs), +26 dB (TRS mic/line inputs), +24 dBu (TRS line inputs), 0 dBv (top panel 1/8" stereo input) |
| Maximum Output Level | +22 dBu (all line-level outputs) |
| Phantom Power | 48 V, mic and talkback inputs, individually switchable |
| Included Accessories | Power cable |
| Optional Accessories | TouchMix-30 Pro Cover (Dust cover) |
| | TouchMix-30 Pro Tote (Soft, padded tote) |
| | TMR-2 (Rack mount kit) |
| | TS-1 (Tablet support stand) |
| Regulatory Approvals | UL, CE, FCC (Class B), RoHS |

¹ A list of drives that have been validated by QSC may be found at qsc.com. The hard drive market is continuously changing. There are many drives QSC has not validated that are compatible with TouchMix multi-track recording. Always test external drives for compatibility before using. Minimum requirement is USB 3.0 SSD (recommended) or minimum 7800 RPM hard drive, FAT32 format.

² The TouchMix Personal Monitor App requires iOS 8 or higher.

³ TouchMix mixers do not support off-the-shelf USB Wi-Fi adaptors. Only QSC part number CP-000033-00 is supported.

TouchMix-16

7" (178 mm) diagonal color TFT, capacitive touch sensing

| |
|---|
| 22 |
| 16 (12 XLR, 4 XLR combo) |
| 2 Stereo, 1/4" TRS |
| Stereo USB / MP3 playback |
| 1 (XLR) |
| 4-band Parametric EQ with Hi/Low Shelving option, Variable 24 db/octave HPF and LPF |
| Gate, Compressor |
| Delay (100 msec max) |
| 12 |
| 2 (XLR line-level) |
| 6 (XLR, line-level) + 2 (TRS, stereo In-Ear Monitor or mono balanced line-level) |
| 2 (TRS, 16 ohm min. impedance, from Auxes 7/8 and 9/10) |
| 1 (Stereo, TRS, line or headphone, 16 ohm min. impedance) |
| 1 (Stereo TRS, line or headphone, 16 ohm min. impedance) |
| 1/3 octave Graphic EQ (Main L/R, Auxes 1-6), 6-band Parametric EQ, Variable HPF and LPF |
| 8-band Anti-Feedback Filters |
| Limiter |
| 100 msec |
| 22 x 22 tracks direct to hard drive |
| N/A |
| Stereo USB / MP3 playback |
| 8 (with Mutes) |
| 8 |
| N/A |
| Selectable. AFL, PFL |
| 4 simultaneous, professional effects engines including Reverb, Echo, Delay, Chorus, Pitch Shift |
| 1 Pitch Correct (assignable to any mono input channel) |
| 1 (1/3 octave. Assignable to channels or user selectable source) |
| 99 User Scenes, 120 Factory Presets, 99 User Presets |
| 2 USB A connectors |
| TouchMix-8/16 Control App for iOS® and Android™ devices controls all mixer functions via Wi-Fi |
| USB Wi-Fi adaptor (included) or external Wi-Fi router (requires USB to ethernet adaptor) |
| 4.75 in x 24.5 in x 15 in (12 cm x 62 cm x 38.1 cm) |
| 2.3 in x 14.2 in x 11.5 in (5.8 cm x 36 cm x 29.1 cm) |
| 11 lb (4.9 kg) |
| 5.9 lb (2.98 kg) |
| 42W, 100-240 VAC, 50-60 Hz |
| Selectable 44.1 kHz or 48 kHz |
| 32-bit floating point |
| <0.005%, +4 dBu; 20 Hz-20 kHz, unity gain, any input to any output |
| 20 Hz-20 kHz +/-0.5 dB, any input to any output |
| 105 dB |
| -126 dBu |
| -86 dBu |
| -80 dB |
| -94 dB |
| 75 dB (60 dB analog, 15 dB digital) |
| +16 dBu (Mic/Line inputs, XLR), +26 dBu (Mic/Line inputs, TRS), +22 dBu (Stereo inputs) |
| +22 dBu (all line-level outputs) |
| 48 V, all mic inputs, individually switchable |
| USB Wi-Fi adapter, soft carrying case, power supply |
| TMR-1 (Rack kit) |

UL, CE, FCC (Class B), RoHS

TouchMix-8

7" (178 mm) diagonal color TFT, capacitive touch sensing

| |
|---|
| 14 |
| 8 (4 XLR, 4 XLR combo) |
| 2 Stereo, 1/4" TRS |
| Stereo USB / MP3 playback |
| N/A |
| 4-band Parametric EQ with Hi/Low Shelving option, Variable 24 db/octave HPF and LPF |
| Gate, Compressor |
| Delay (100 msec max) |
| 6 |
| 2 (XLR line-level) |
| 4 (XLR, line-level) |
| 1 (TRS, 16 ohm min. impedance, from Auxes 3/4) |
| 1 (Stereo, TRS, line or headphone, 16 ohm min. impedance) |
| N/A |
| 1/3 octave Graphic EQ, 6-band Parametric EQ, Variable HPF and LPF |
| 8-band Anti-Feedback Filters |
| Limiter |
| 100 msec |
| 14 x 14 tracks direct to hard drive |
| N/A |
| Stereo USB / MP3 playback |
| 8 (with Mutes) |
| 8 |
| N/A |
| Selectable. AFL, PFL |
| 4 simultaneous, professional effects engines including Reverb, Echo, Delay, Chorus, Pitch Shift |
| 1 Pitch Correct (assignable to any mono input channel) |
| 1 (1/3 octave. Assignable to channels or user selectable source) |
| 99 User Scenes, 120 Factory Presets, 99 User Presets |
| 2 USB A connectors |
| TouchMix-8/16 Control App for iOS® and Android devices controls all mixer functions via Wi-Fi |
| USB Wi-Fi adaptor (included) or external Wi-Fi router (requires USB to ethernet adaptor) |
| 4.5 in x 20 in x 16.5 in (11.4 cm x 50.8 cm x 42 cm) |
| 2.2 in x 13.1 in x 9.6 in (5.6 cm x 33.3 cm x 24.5 cm) |
| 10.7 lbs (4.9 kg) |
| 4.3 lb (1.95 kg) |
| 42W, 100-240 VAC, 50-60 Hz |
| Selectable 44.1 kHz or 48 kHz |
| 32-bit floating point |
| <0.005%, +4 dBu; 20 Hz-20 kHz, unity gain, any input to any output |
| 20 Hz-20 kHz +/-0.5 dB, any input to any output |
| 105 dB |
| -126 dBu |
| -86 dBu |
| -80 dB |
| -94 dB |
| 75 dB (60 dB analog, 15 dB digital) |
| +16 dBu (Mic/Line inputs, XLR), +26 dBu (Mic/Line inputs, TRS), +22 dBu (Stereo inputs) |
| +22 dBu (all line-level outputs) |
| 48 V, all mic inputs, individually switchable |
| USB Wi-Fi adapter, soft carrying case, power supply |
| TMR-1 (Rack kit) |

UL, CE, FCC (Class B), RoHS



+1.800.854.4079 | +1.714.754.6175 | #beyondmixing | www.qsc.com

QSC, LLC. 1675 MacArthur Boulevard Costa Mesa, CA 92626 USA. ©2017 QSC, LLC. All rights reserved. QSC, the QSC logo and TouchMix are registered trademarks of QSC, LLC in the U.S. Patent and Trademark Office and other countries. Mac, macOS and iPad are trademarks of Apple Inc., registered in the U.S. and other countries. Windows is a trademark of Microsoft, Inc. Android is a trademark of Google, Inc. Specifications subject to change without notice.